

# RACKS AND CABINETS

## OUTDOOR CABINETS

### FLOOR EXTERIOR CABINET IP55 CABINET WITH 19" SWIVEL FRAME

They come in IP55 protection class (options IP54, IP65 and IP66) with their polyurethane cast gasketed cover structure.

NTNC24UIP55-SW  
NTNC45UIP55-SW



## FLOOR CABINETS

### NETWORK CABINET

27, 36, 42 or 45U  
WIDTH: 600 or 800mm (24" or 32")  
DEPTH: 600, 800 or 1000mm  
24, 32 or 40"

### SERVER CABINET

42, 45 or 48U  
WIDTH: 800mm (32")  
DEPTH: 800, 1000 or 1200mm  
32, 40 or 48"

URANUS SERIES / MICRO DATA  
CENTER SERVER CABINETS

## ACCESSORIES

SHELF FIXED OR ADJUSTABLE  
2 POINTS OR 4 POINTS

FILLER PANELS 1 TO 4U  
FANS SINGLE, DOUBLE OR QUAD



## CABLE ADMINISTRATION

HORIZONTAL CABLE MANAGEMENT  
1U AND 2U

VERTICAL CABLE MANAGEMENT  
DOUBLE AND SIMPLEX

NITRO WRAP 3/4" 30 OR 75FT



**Nitrotel**  
Manufacturing

# LINE CARD

WE HELP YOU STAY CONNECTED!



## WALL MOUNT CABINETS

WALL MOUNT CABINETS US  
MADE/DOUBLE  
SECTION 600X600mm (24"x24")  
RMU: 6-9-11-16-20-23

WALL MOUNT CABINETS/SINGLE  
SECTION  
600X600 OR 600X450 (24"x18")  
RMU: 6-9-12-16-20-23

NITROTEL SOHO CABINET  
NITROTEL SOHO SLIM CABINET



## OPEN RACKS

FOUR POST ADJUSTABLE STEEL  
RACK TWO POST STEEL RACK

28, 38, 42 AND 45U  
TIA-310D, UL APPROVED



## PDU

VERTICAL MOUNT, 18 OUTLET PDU

1U HORIZONTAL MOUNT, 19 INCHES,  
10 OUTLET PDU

1U HORIZONTAL MOUNT, 19 INCHES



## POWER MANAGEMENT

- MINI DC UPS HFC/FTTH  
APPLICATIONS

- OPTIONS 37WH TO 97WH,  
OUTPOST 5,9 AND 12V + USB



## aisle CONTAINMENT SOLUTION

- 4 TO 24 CABINETS, SEVERAL  
CONTROL ACCESS TYPES  
- THEY ARE MODULAR, EXPANDIBLE  
AND CUSTOMIZABLE



## COLO CABINETS

SERVICE PROVIDER COLOCATION  
CABINETS

Divided into four compartment  
configuration (2 or 3 optional)  
Perforations on front and rear door  
enable optimum airflow up to 78%  
within the rack.  
Robust steel frame makes static  
loading capacity up to 1200kg  
Opening angle over 130 degree can be  
achieved with front door and rear door.



Support for the development and updating of the technological platform of organizations, through training and certification of the human resources that design, install and test Infrastructures of Communication Networks.

END TO END SOLUTIONS  
INNOVATIVE PRODUCTS  
TRUSTED PARTNER  
COMPETITIVE PRICING  
PROVEN PERFORMANCE  
LIFETIME WARRANTY  
UL CERTIFIED  
ETL VERIFIED

Nitrotel is a leading industry manufacturer of High Quality, Network Physical Infrastructure Solutions. Our offer includes a range of copper, fiber and racks and cabinet solutions to fit the needs of all type of applications and markets such as:

- Data Centers
- Enterprise Networks
- Broadband Infrastructure - FTTH
- Outside Plant

Our company value chain includes business partners such as: Distributor channels, Systems Integrators, local sales representatives, engineers and designers, which will support directly or indirectly all of our customer needs.

## CERTIFICATIONS & WARRANTY

ALL OUR PRODUCTS ARE UL CERTIFIED, ETL VERIFIED  
AND HAVE A MANUFACTURER LIFETIME WARRANTY





## FIBER OPTIC

## COPPER

## OUTDOOR CABLE

**DRY CORE STRANDED LOOSE TUBE, HDPE**  
SINGLE JACKET  
STEEL ARMORED DOUBLE JACKET  
STEEL ARMORED SINGLE JACKET

**STRANDS**  
2, 4, 8, 12, 36, 48, 72, 96, 144

**GLASS**  
MM: OM1, OM2, OM3, OM4  
SM: G652B, G652D, G655

## INDOOR AND INDOOR-OUTDOOR CABLE

**INDOOR / OUTDOOR DISTRIBUTION CABLE TIGHT BUFFER**  
**FIBERS:** 2-4-8-12-24-48 MM: OM1, OM2, OM3, OM4  
**SM:** G652D, G657A1, G657A2, G655  
**JACKET:** LDPE OR LSHZ

**INDOOR DISTRIBUTION CABLE THIGH BUFFER**  
**FIBERS:** 2-4-8-12-24-48 MM: OM1, OM2, OM3, OM4  
**SM:** G652D, G652D, G655, G657A1/A2  
**JACKET:** OFNR, OFNP OR LSHZ

## FTTH DROP &amp; ADSS

**DROP OPTICAL CABLE BOW-TYPE CABLE BOW-TYPE SELF SUPPORTING**  
**FIBERS:** 1-2 TYPE: G657A1-G657A2

**ALL DIELECTRIC SELF-SUPPORTING CABLE (ADSS)**  
**SPAN:** 100/200, 400  
**FIBERS:** 6-8-12-24-36-48-72-96-144

**ALL DIELECTRIC SELF-SUPPORTING CABLE (ASU)**  
**SPAN:** 80/100 FIBERS: 6-12-24  
**SM:** G652B, G652D, G655

## DOME &amp; INLINE ENCLOSURE

**MINI INLINE SPLICE CLOSURE**  
2 PORTS, 24 SPLICES INLINE  
SPLICE CLOSURE 4-6-8 PORTS  
48, 72, 96 OR 144 SPLICES

**MINI DOME OPTIC - SPLICE CLOSURE**  
4 IN -OUT PORTS, 48 SPLICES

**DOME SPLICE CLOSURE**  
4, 5 OR 7, 6 IN -OUT PORT,  
48, 72, 96 OR 144 SPLICES

## COPPER NETWORK CABLE

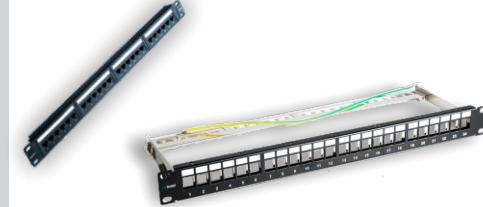
**CAT 5E UTP OR FTP**  
**CAT 6 UTP OR FTP**  
**CAT 6A UTP OR FTP**  
JACKET OPTIONS: CM, CMR, CMP  
LSZH UL AND ETL TEST



## PATCH PANEL

PRE-CONFIGURED 24 OR 48 PORT UTP  
CAT5E, CAT6 OR CAT6A  
FTP CAT5E, CAT 6 OR CAT6A

MODULA BLANK PATCH PANEL 24 OR 48 PORTS UTP OR FTP



## OPTICAL DISTRIBUTION FRAME (ODF)

**FIBER DISTRIBUTION PANEL**  
**RMU:** 1-2-3-4  
**ADAPTER PLATES:** 6, 8 OR 12 SC OR LC SIMPLEX, DUPLEX OR QUAD

**BASIC DISTRIBUTION FRAME:**  
24 OR 12 SC SIMPLEX  
24 LC DUPLEX

**ADAPTER COLORS:**  
BLUE, AQUA OR GREEN

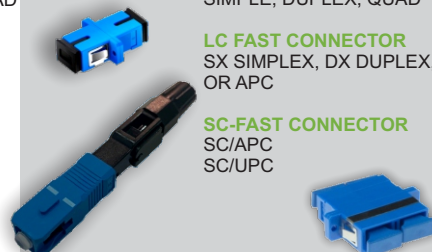


## ADAPTERS &amp; CONNECTORS

**FIBER OPTIC ADAPTER**  
**CONNECTORS:** LC, SC, ST, FC  
FORMAT  
SIMPLE, DUPLEX, QUAD

**LC FAST CONNECTOR**  
SX SIMPLEX, DX DUPLEX, UPC OR APC

**SC-FAST CONNECTOR**  
SC/APC  
SC/UPC

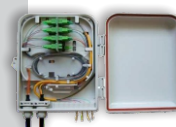


## OPTICAL TERMINATION BOX (OTB)

**INDOOR FIBER OPTIC TERMINATION BOX IP-66**  
**PORTS:** 2, **DROPS:** 4-8-16  
**ADAPTER CONNECTOR:** SC UPC OR APC

**OUTDOOR OPTICAL TERMINATION BOX IP-66**  
**PORTS:** 2 OR 4, **DROPS:** 8, 16 OR 24  
**ADAPTER CONNECTOR:** SC UPC OR APC

**OUTDOOR OPTICAL TERMINATION BOX IP-68**  
**PORTS:** 2 OR 4, **DROPS:** 8, 16 OR 24  
**ADAPTER CONNECTOR:** SC UPC OR APC



## FUSION SPLICER

**SINGLE CORE FIBER ALIGNMENT SYSTEM (PAS)**

SIMULTANEOUS X AND Y VIEWS (380 X MAGNIFICATION) AUTO CHECK END FACE OR FIBER AUTO CALCULATE SPLICING LOSS

SPLICE FIBER IN 7 SECONDS

HIGH SPEED IMAGE PROCESSING TECHNOLOGY AND SPECIAL PRECISION POSITIONING TECHNOLOGY

WIDE USED FOR SM AND MM QUANT. FIBER AND MORE

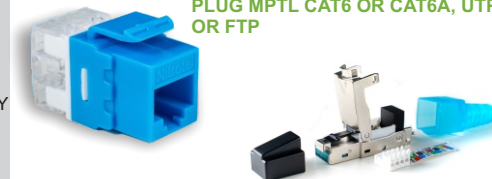


## PLUG AND JACK

**JACK 180 DEGREES CAT5E, CAT6 OR CAT6A**  
UTP OR FTP OPTIONS

PLUG UTP OR FTP CAT5E OR CAT6  
PASS-THROUGH OR STANDARDS

**PLUG MPTL CAT6 OR CAT6A, UTP OR FTP**



## EXTERIOR ENVIRONMENT COPPER CABLE

**CAT5E SF/UTP CABLE**

**CAT5E, CAT6 OR CAT6A, EXTERIOR OR DIRECT BURIAL**

UTP OR FTP CABLE OPTIONS



## JUMPER &amp; PIGTAILS &amp; MPO

**JUMPERS 2 OR 3MM, DUPLEX OR SIMPLEX**  
CONNECTORS SC, LC, ST OR FC, OPTIONS  
PC, UPC OR APC FERRULE  
**GLASS:** MM OM1, OM2, OM3, OM4  
**SM:** G652D OR G657A1  
**LENGTH:** 1,2,3,5,10M

**PIGTAILS 900 UM, 2MT**  
CONNECTORS SC, LC, ST OR FC, OPTIONS  
PC, UPC OR APC FERRULE  
**GLASS:** MM OM1 OM2, OM3, OM4.  
**SM:** G652D OR G657A1



## MEDIA CONVERTER

1000 MBS TO 10/100/1000 T(X) 2 FIBER OR 1 FIBER (WDM)  
SC MM OR SW (10, 20, 40 OR 80KMS)

10 GBS TO 10/100/1000/10000 T(X) 2 OR 1 FIBER (WDM) SC MM OR SM (10, 20, 40 OR 80KMS)

TRANSCEIVER SFP 1 GBS (EMPTY)  
10/100/1000 BASETX

**SFP (1GB) OR SFP+ (10GB)**  
**TRANSCEIVER DUPLEX/ SIMPLEX LC MM OR SM (10, 20, 40 OR 80KM)**

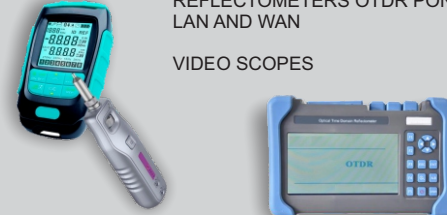


## TEST EQUIPMENTS

OPTICAL POWER METERS (OPM) AND OLTS

REFLECTOMETERS OTDR PON, LAN AND WAN

VIDEO SCOPES



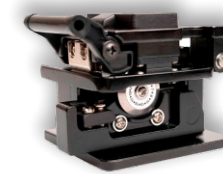
## TOOLS

CLEAVERS 0.5 OR 1.5 DEGREES

VISUAL FAULT LOCATORS 5MW TO 25 MW

CLEANING ACCESSORIES

KIT FTTH TOOLS



## PATCH CORD

**LENGTHS (FT):** 1, 2, 3, 5, 7, 10, 15, 25, 30, 50, 75, 100

**COLORS:** BLUE, WHITE, GRAY, BLACK, RED, YELLOW, PURPLE, GREEN

**CAT5E, CAT6 OR CAT6A UTP OR FTP, SLIM 28 AWG OR STANDARD (24 AWG)**



## TOOLS COPPER

**DUAL-MODULAR CRIMPING TOOL NITROTEL EZ**

**TERMINATION TOOL FOR 180 DEGREE SERIES KEYSTONE JACK**

**PUNCH DOWN, PASS-TROUGH, STRIPPING AND TESTER**

