

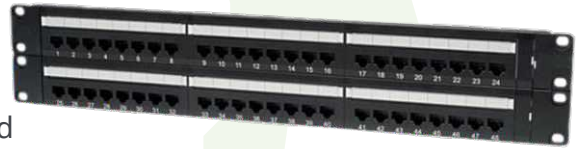
**PRODUCT DATA SHEET**

**Pach-Panel EngineerPro Cat6A, 24 or 48-ports**

**Description**

Nitrotel's EngineerPro Cat6A, 24 or 48-port, 1U or 2U patch panel design offers TIA.568.2-D performance up to 500 MHz to support 10GBASE-T and provides a best-in-class alien crosstalk (AXT) suppression.

These horizontal 19" rack-mount patch panels include 24/48 pcs EngineerPro® Cat6A unshielded keystone jacks with dust cap protection, rear cable management bar and mounting accessories.



**Features**

- Standard density 1U 24-port, 2U 48-port.
- Exclusive crisscross design provides maximum alien crosstalk protection.
- Convenient rear cable management bar to facilitate proper bend radius of cables.
- Compatible with industry-standard 19" distribution racks.
- Kitted with EngineerPro® toolless Cat6A connectors (black).
- Universal T568A and T568B wiring labels for 110-style IDC termination.

**Standards Compliance**

- ANSI/TIA-568.2-D
- ISO 11801 Class E
- UL listed E475326
- RoHS Compliance

**Mechanical**

1. Housing Material: PBT
2. Panel Frameme: Carbon Steel, Powder coating in blank color

**48 Ports Dimensions**

